

SX 06

Stainless Steel, Borehole Deep Well Pumps



FEATURES

- Rpm: 2900
- Rotation: CCW
- Maximum sand content is 50 gr/m³

MATERIALS

Diffuser & Impeller:

AISI 304L - Stainless Steel

Pump Shaft / Coupling:

AISI 420 - Stainless Steel

Strainer:

AISI 304 - Stainless Steel

AISI 316 - Stainless Steel

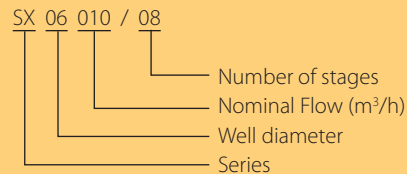
APPLICATIONS

- Water supply from deep wells.
- Pressure boosting and water distribution in civil and industrial systems.
- Supply of surge tanks and reservoirs.
- Firefighting and washing systems.
- Water table level control.
- Irrigation.
- Mining Industry.
- Golf courses.

SPECIFICATIONS

- Delivery: Up to 250 m³/h
- Head: Up to 650 m

IDENTIFICATION

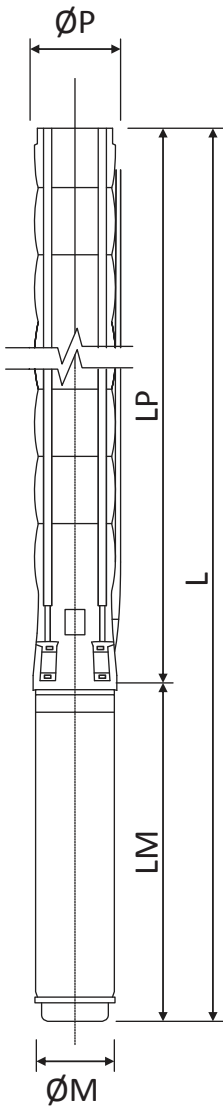


SX 06

Stainless Steel, Borehole Deep Well Pumps

SX 06030

Outlet Connection Diameter:
3" Inside Threaded



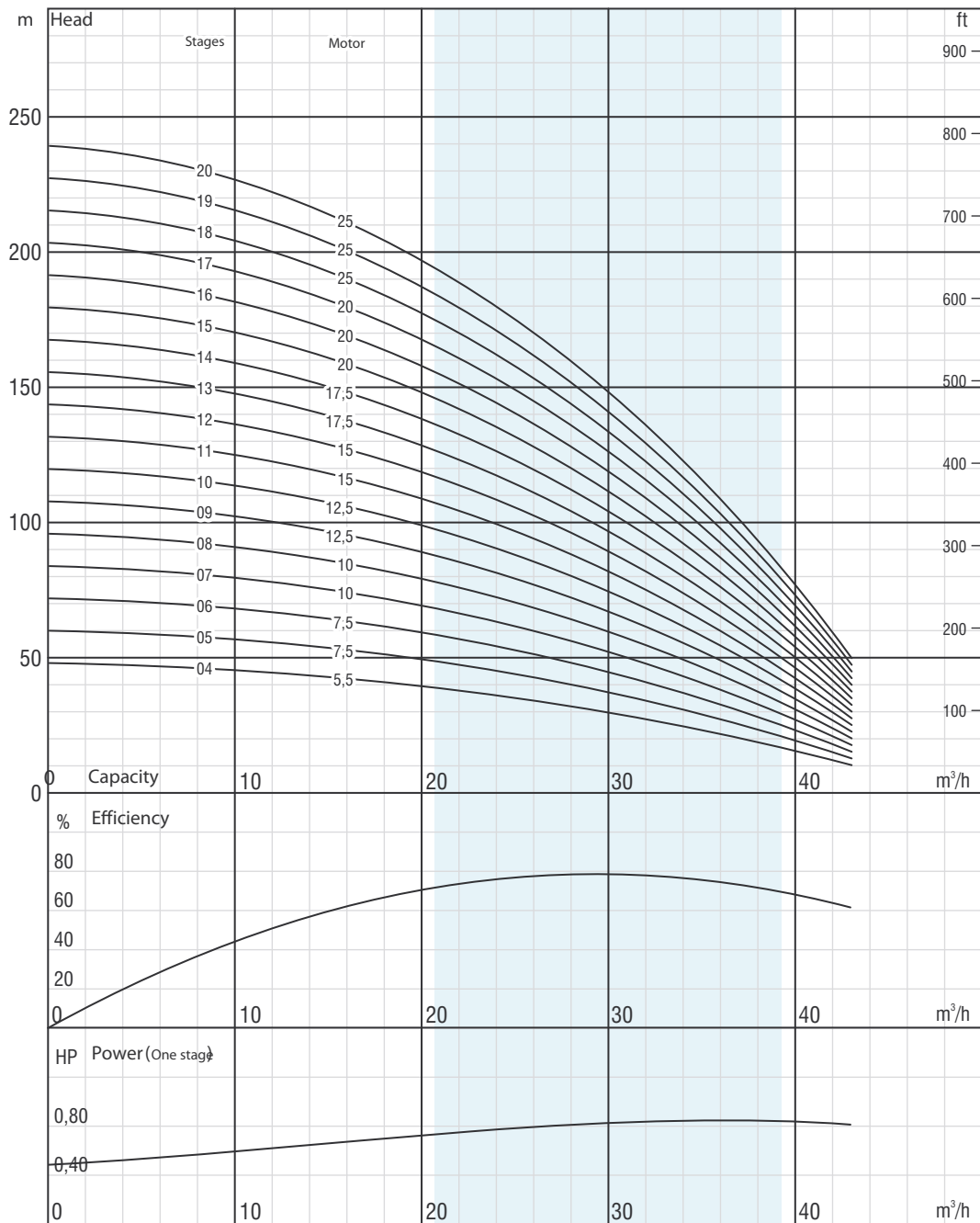
Product Code	Stage	Motor		Dimensions					Weight		
		kW	HP	L	LM	LP	$\varnothing M$	$\varnothing P$	Motor	Pump	Total
SX 06030/04	4	4	5,5	1239	649	590	142	132	40	11	51
SX 06030/05	5	5,5	7,5	1364	678	686	142	132	43,5	13	57
SX 06030/06	6	5,5	7,5	1460	678	782	142	132	43,5	15	59
SX 06030/07	7	7,5	10	1636	758	878	142	132	50	17	67
SX 06030/08	8	7,5	10	1732	758	974	142	132	50	19	69
SX 06030/09	9	9,3	12,5	1870	800	1070	142	132	55	21	76
SX 06030/10	10	9,3	12,5	1966	800	1166	142	132	55	23	78
SX 06030/11	11	11	15	2113	851	1262	142	132	60	26	86
SX 06030/12	12	11	15	2209	851	1358	142	132	60	28	88
SX 06030/13	13	13	17,5	2365	911	1454	142	132	65	30	95
SX 06030/14	14	13	17,5	2461	911	1550	142	132	65	32	97
SX 06030/15	15	15	20	2619	973	1646	142	132	72	34	106
SX 06030/16	16	15	20	2715	973	1742	142	132	72	36	108
SX 06030/17	17	15	20	2811	973	1838	142	132	72	38	110
SX 06030/18	18	18,5	25	2940	1006	1934	142	132	76	40	116
SX 06030/19	19	18,5	25	3036	1006	2030	142	132	76	42	118
SX 06030/20	20	18,5	25	3132	1006	2126	142	132	76	44	120

Product Code	Stage	Motor		Current	m ³ /h	Head (meter)						
		kW	HP			0	7,2	14,4	22	28,8	36	43,2
SX 06030/04	4	4	5,5	10,2	48	46	43	38	31	22	10	
SX 06030/05	5	5,5	7,5	13,6	60	58	54	47	39	27	12	
SX 06030/06	6	5,5	7,5	13,6	72	69	64	57	46	33	15	
SX 06030/07	7	7,5	10	17,2	84	81	75	66	54	38	17	
SX 06030/08	8	7,5	10	17,2	96	92	86	76	62	44	20	
SX 06030/09	9	9,3	12,5	20,8	108	104	97	85	70	49	22	
SX 06030/10	10	9,3	12,5	20,8	119	116	107	95	77	54	25	
SX 06030/11	11	11	15	23,7	131	127	118	104	85	60	27	
SX 06030/12	12	11	15	23,7	143	139	129	113	93	65	30	
SX 06030/13	13	13	17,5	28,7	155	150	139	123	100	71	32	
SX 06030/14	14	13	17,5	28,7	167	162	150	132	108	76	35	
SX 06030/15	15	15	20	33,1	179	173	161	142	116	82	37	
SX 06030/16	16	15	20	33,1	191	185	172	151	124	87	40	
SX 06030/17	17	15	20	33,1	203	196	182	161	131	93	42	
SX 06030/18	18	18,5	25	41,8	215	208	193	170	139	98	45	
SX 06030/19	19	18,5	25	41,8	227	220	204	180	147	103	47	
SX 06030/20	20	18,5	25	41,8	239	231	214	189	155	109	50	

SX 06

Stainless Steel, Borehole Deep Well Pumps

SX 06030



The right to change design and all specifications without prior notice reserved.

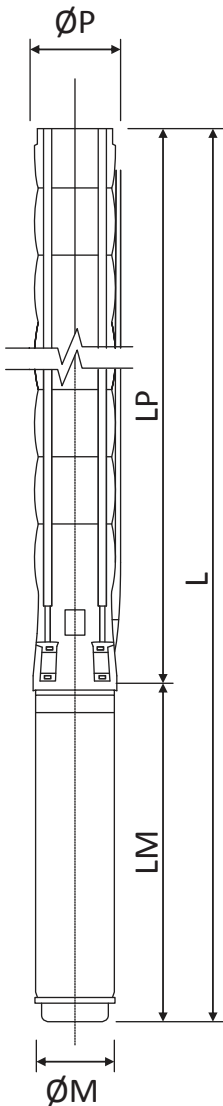
ISO 9906 Annex A

SX 06

Stainless Steel, Borehole Deep Well Pumps

SX 06030

Outlet Connection Diameter:
3" Inside Threaded



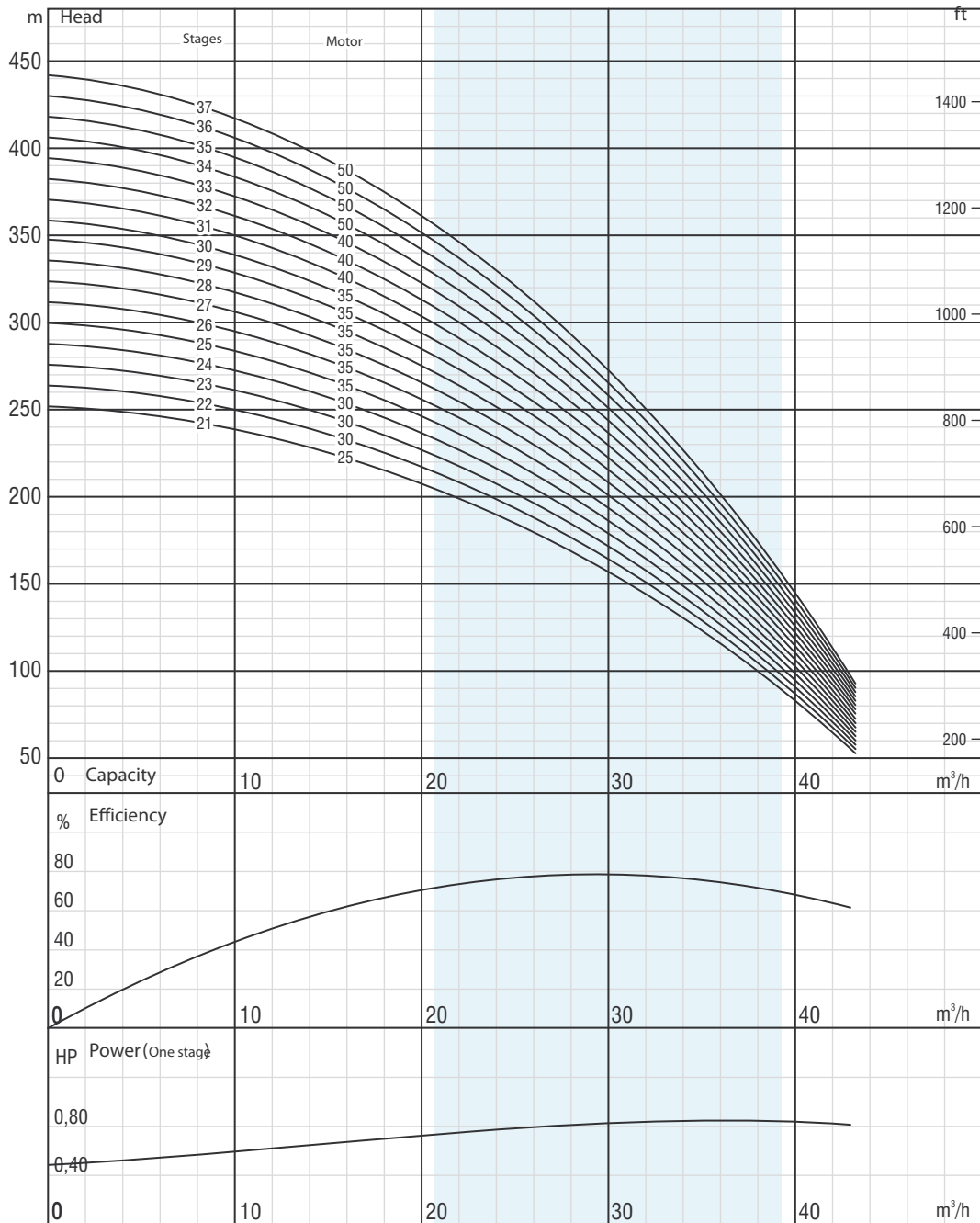
Product Code	Stage	Motor		Dimensions					Weight		
		kW	HP	L	LM	LP	$\varnothing M$	$\varnothing P$	Motor	Pump	Total
SX 06030/21	21	18,5	25	3228	1006	2222	142	132	76	46	122
SX 06030/22	22	22	30	3424/3208	1106/890	2318	142/172	132	87/86	48	135/134
SX 06030/23	23	22	30	3520/3304	1106/890	2414	142/172	132	87/86	51	138/137
SX 06030/24	24	22	30	3616/3400	1106/890	2510	142/172	132	87/86	53	140/139
SX 06030/25	25	26,5	35	3823/3546	1217/940	2606	142/172	132	98/91	55	153/146
SX 06030/26	26	26,5	35	3919/3642	1217/940	2702	142/172	132	98/91	57	155/148
SX 06030/27	27	26,5	35	4015/3738	1217/940	2798	142/172	132	98/91	59	157/150
SX 06030/28	28	26,5	35	4111/3834	1217/940	2894	142/172	132	98/91	61	159/152
SX 06030/29	29	26,5	35	4207/3930	1217/940	2990	142/172	132	98/91	63	161/154
SX 06030/30	30	26,5	35	4303/4026	1217/940	3086	142/172	132	98/91	65	163/156
SX 06030/31	31	30	40	4429/4162/4238	1247/980/1056	3182	142/172/192	132	103/103/129	67	170/170/196
SX 06030/32	32	30	40	4525/4258/4334	1247/980/1056	3278	142/172/192	132	103/103/129	69	172/172/198
SX 06030/33	33	30	40	4621/4354/4430	1247/980/1056	3374	142/172/192	132	103/103/129	71	174/174/200
SX 06030/34	34	37	50	4817/4530/4586	1347/1060/1116	3470	142/172/192	132	110/113/138	73	183/186/211
SX 06030/35	35	37	50	4913/4626/4682	1347/1060/1116	3566	142/172/192	132	110/113/138	75	185/188/213
SX 06030/36	36	37	50	5009/4722/4778	1347/1060/1116	3662	142/172/192	132	110/113/138	78	188/191/216
SX 06030/37	37	37	50	5105/4818/4874	1347/1060/1116	3758	142/172/192	132	110/113/138	80	190/193/218

Product Code	Stage	Motor		Current	m ³ /h	Head (meter)						
		kW	HP			0	7,2	14,4	22	28,8	36	43,2
SX 06030/21	21	18,5	25	41,8	0	251	243	225	199	162	114	52
SX 06030/22	22	22	30	48,5	0	263	254	236	208	170	120	54
SX 06030/23	23	22	30	48,5	0	275	266	247	218	178	125	57
SX 06030/24	24	22	30	48,5	0	287	277	257	227	185	131	59
SX 06030/25	25	26,5	35	56,4	0	299	289	268	236	193	136	62
SX 06030/26	26	26,5	35	56,4	0	311	301	279	246	201	142	64
SX 06030/27	27	26,5	35	56,4	0	323	312	290	255	209	147	67
SX 06030/28	28	26,5	35	56,4	0	334	324	300	265	216	152	69
SX 06030/29	29	26,5	35	56,4	0	346	335	311	274	224	158	72
SX 06030/30	30	26,5	35	56,4	0	358	347	322	284	232	163	74
SX 06030/31	31	30	40	64,6	0	370	358	332	293	240	169	77
SX 06030/32	32	30	40	64,6	0	382	370	343	303	247	174	79
SX 06030/33	33	30	40	64,6	0	394	381	354	312	255	180	82
SX 06030/34	34	37	50	81,6	0	406	393	365	322	263	185	84
SX 06030/35	35	37	50	81,6	0	418	405	375	331	270	191	87
SX 06030/36	36	37	50	81,6	0	430	416	386	340	278	196	89
SX 06030/37	37	37	50	81,6	0	442	428	397	350	286	201	92

SX 06

Stainless Steel, Borehole Deep Well Pumps

SX 06030



The right to change design and all specifications without prior notice reserved.

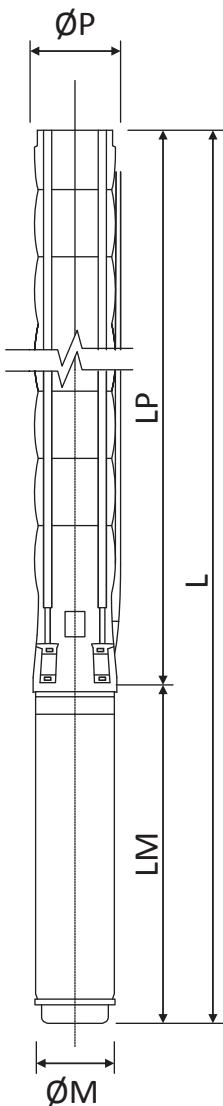
ISO 9906 Annex A

SX 06

Stainless Steel, Borehole Deep Well Pumps

SX 06030

Outlet Connection Diameter:
3" Inside Threaded



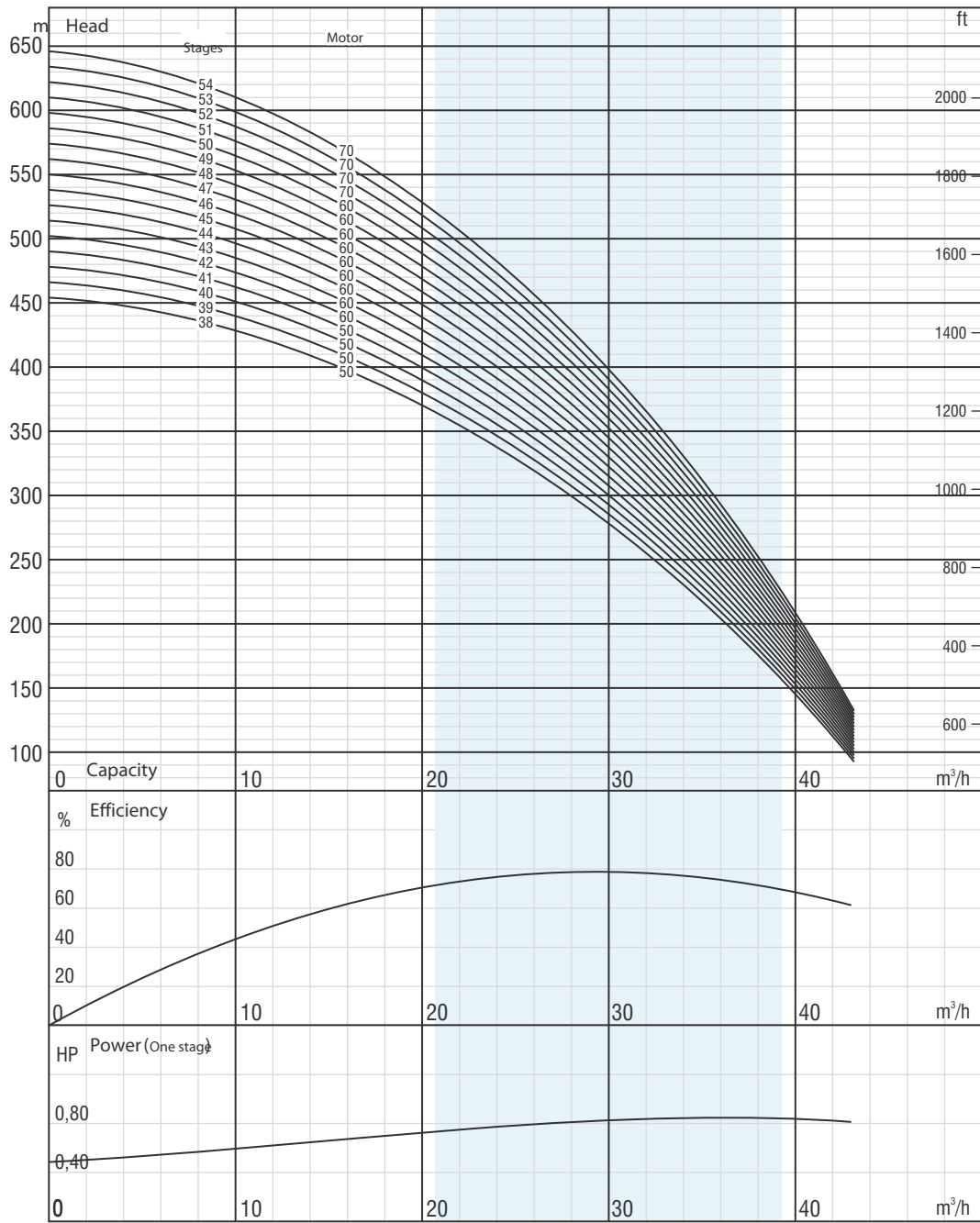
Product Code	Stage	Motor		Dimensions					Weight		
		kW	HP	L	LM	LP	$\varnothing M$	$\varnothing P$	Motor	Pump	Total
SX 06030/38	38	37	50	5201/4914/4970	1347/1060/1116	3854	142/172/192	132	110/113/138	82	192/195/220
SX 06030/39	39	37	50	5297/5010/5066	1347/1060/1116	3950	142/172/192	167	110/113/138	84	194/197/222
SX 06030/40	40	37	50	5393/5106/5162	1347/1060/1116	4046	142/172/192	167	110/113/138	86	196/199/224
SX 06030/41	41	37	50	5489/5202/5258	1347/1060/1116	4142	142/172/192	167	110/113/138	88	198/201/226
SX 06030/42	42	45	60	5377/5439	1139/1201	4238	172/192	167	127/152	90	217/242
SX 06030/43	43	45	60	5473/5535	1139/1201	4334	172/192	167	127/152	92	219/244
SX 06030/44	44	45	60	5569/5631	1139/1201	4430	172/192	167	127/152	94	221/246
SX 06030/45	45	45	60	5665/5727	1139/1201	4526	172/192	167	127/152	96	223/248
SX 06030/46	46	45	60	5761/5823	1139/1201	4622	172/192	167	127/152	98	225/250
SX 06030/47	47	45	60	5857/5919	1139/1201	4718	172/192	167	127/152	100	227/252
SX 06030/48	48	45	60	5953/6015	1139/1201	4814	172/192	167	127/152	103	230/255
SX 06030/49	49	45	60	6049/6111	1139/1201	4910	172/192	167	127/152	105	232/257
SX 06030/50	50	45	60	6145/6207	1139/1201	5006	172/192	167	127/152	107	234/259
SX 06030/51	51	52	70	6320/6388	1218/1286	5102	172/192	167	138/170	109	247/279
SX 06030/52	52	52	70	6416/6484	1218/1286	5198	172/192	167	138/170	111	249/281
SX 06030/53	53	52	70	6512/6580	1218/1286	5294	172/192	167	138/170	113	251/283
SX 06030/54	54	52	70	6608/6676	1218/1286	5390	172/192	167	138/170	115	253/285

Product Code	Stage	Motor		Current	m ³ /h	Head (meter)						
		kW	HP			0	7,2	14,4	22	28,8	36	43,2
SX 06030/38	38	37	50	81,6	454	439	407	359	294	207	94	
SX 06030/39	39	37	50	81,6	466	451	418	369	301	212	97	
SX 06030/40	40	37	50	81,6	478	462	429	378	309	218	99	
SX 06030/41	41	37	50	81,6	490	474	440	388	317	223	102	
SX 06030/42	42	45	60	90	502	485	450	397	324	229	104	
SX 06030/43	43	45	60	90	514	497	461	407	332	234	107	
SX 06030/44	44	45	60	90	526	509	472	416	340	240	109	
SX 06030/45	45	45	60	90	538	520	483	426	348	245	111	
SX 06030/46	46	45	60	90	550	532	493	435	355	250	114	
SX 06030/47	47	45	60	90	561	543	504	444	363	256	116	
SX 06030/48	48	45	60	90	573	555	515	454	371	261	119	
SX 06030/49	49	45	60	90	585	566	525	463	379	267	121	
SX 06030/50	50	45	60	90	597	578	536	473	386	272	124	
SX 06030/51	51	52	70	106	609	589	547	482	394	278	126	
SX 06030/52	52	52	70	106	621	601	558	492	402	283	129	
SX 06030/53	53	52	70	106	633	613	568	501	409	289	131	
SX 06030/54	54	52	70	106	645	624	579	511	417	294	134	

SX 06

Stainless Steel, Borehole Deep Well Pumps

SX 06030



The right to change design and all specifications without prior notice reserved.

ISO 9906 Annex A